

- In the listing of downloads, select the correct version of VMware Horizon View Clients for your Windows system and click the “Go to Downloads” button. The options (32 or 64-bit) are shown below in figure 3.

VMware Horizon Client for Windows		
VMware Horizon Client for 64-bit Windows	2016-03-31	Go to Downloads
VMware Horizon Client for 32-bit Windows	2016-03-31	Go to Downloads

Figure 3

- The following page verifies that VMware Horizon View Client for Windows is being downloaded. Make sure that version 3.4 (or higher) is selected from the drop down menu and click the download button shown in figure 4.

Home / VMware Horizon Client for 32-bit Windows

Download VMware Horizon Client for 32-bit Windows

Select Version 4.0.1

Description The VMware Horizon Client for 32-bit Windows

Release Date 2016-03-31

Type Product Binaries

Product Resources

- [View My Download History](#)
- [Product Info](#)
- [Documentation](#)
- [VMware View Mobile Client Privacy](#)
- [Horizon View Community](#)
- [How to get the Horizon \(with View\) Client for Linux](#)

[Product Downloads](#) [Drivers & Tools](#) [Open Source](#) [Custom ISOs](#)

Product/Details

The VMware Horizon Client for 32-bit Windows
 File size: 34.27 MB
 File type: exe file
[Read More](#)

[Download](#)

Information about MD5 checksums and SHA1 checksums.

Figure 4

- The installation package will begin to download.
- Upon completion of the download, run the file that was downloaded to begin installation of the VMware Horizon View Client.
- The Installation Wizard will now run. Click the “Next” button to go to the License Agreement page.

8. Select the “I accept the terms in the license agreement” radio button shown in Figure 5 and click “Next.”

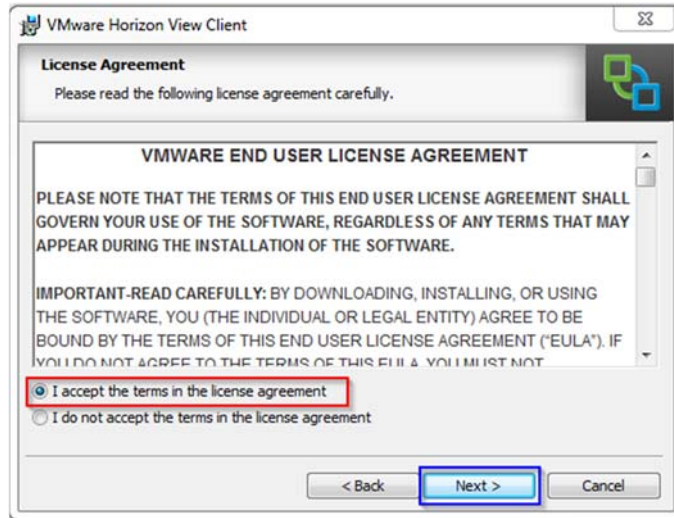


Figure 5

9. Figure 6 displays the Custom Setup page. The default selections are acceptable. Click “Next” to move onto the next screen.

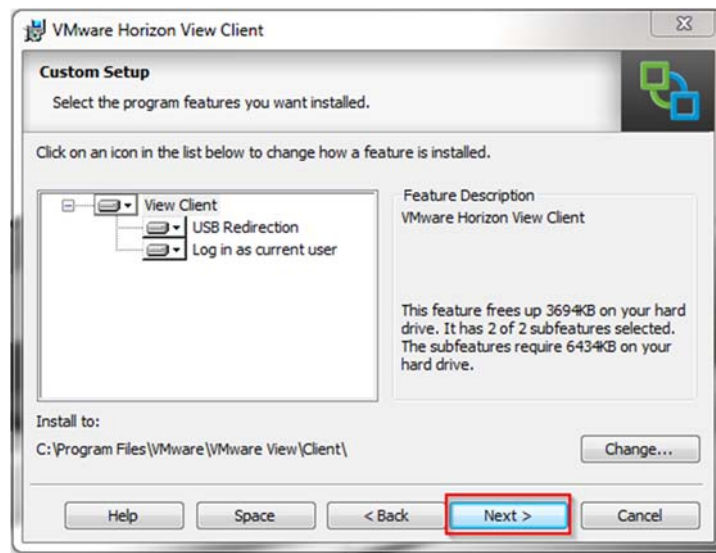


Figure 6

10. Figure 7 displays the Default Server page. Move your cursor into the text block and enter “vlabs.uml.edu.” This is the server that the VMware Horizon View Client will connect to. After entering the server, click “next.”

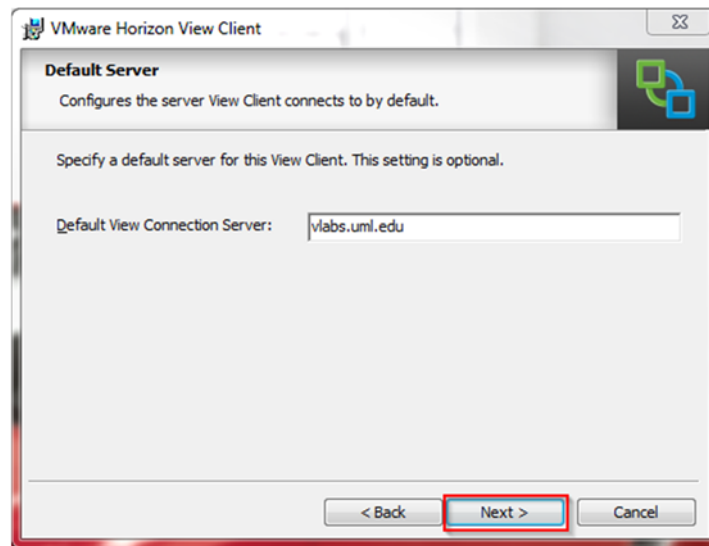


Figure 7

11. In the following three windows shown in Figure 8, click “Next” to accept the default selections in each of the windows. Clicking “Install” in the final Window will begin the installation process.

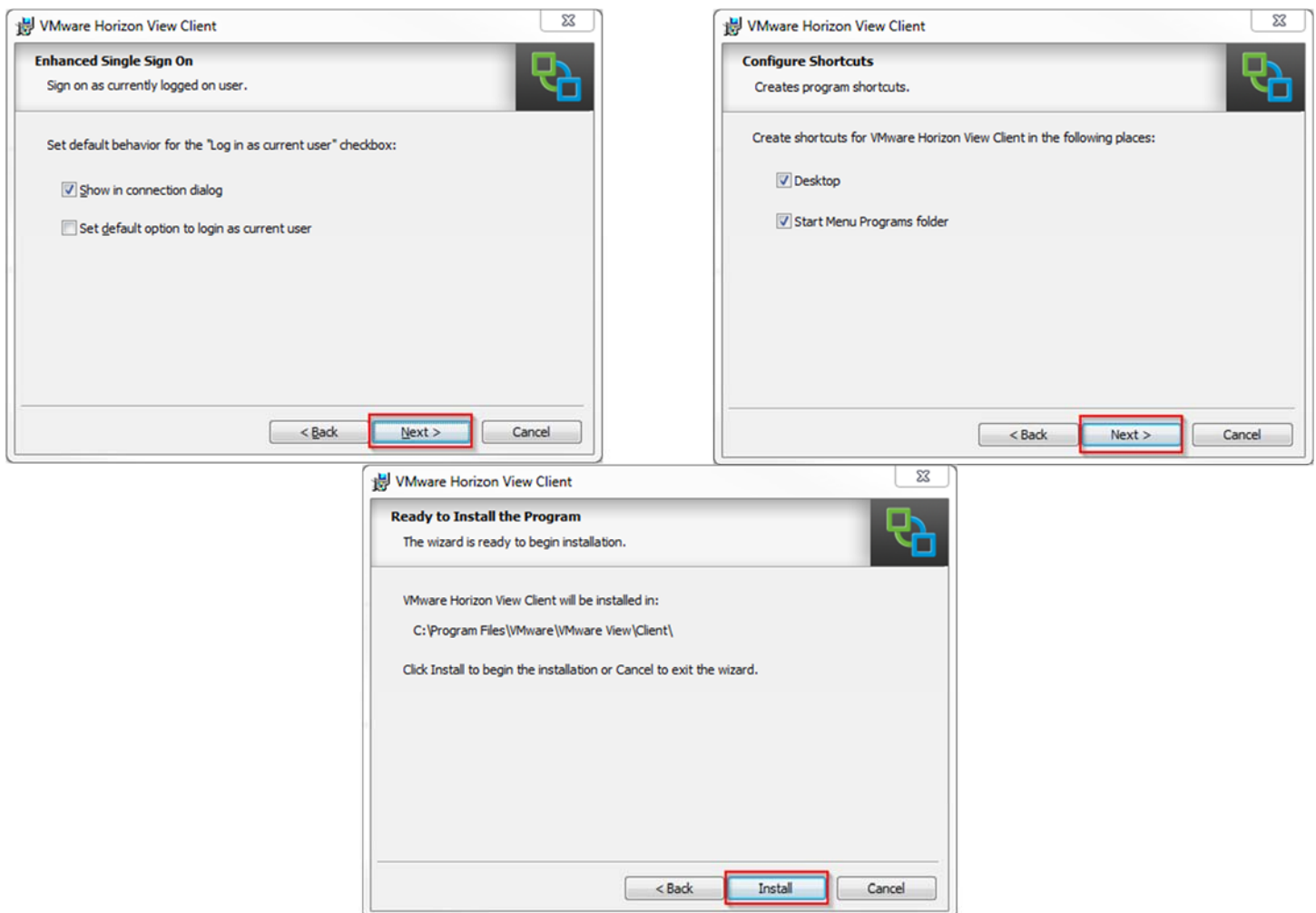


Figure 8

- The installation process will begin to run. Upon completion, click the “Finish” button to close the Installation Wizard. You will be prompted to reboot your machine with a window shown in figure 9, click “Yes.” Be sure to save all work in other applications before rebooting. You may click no and reboot later, but the VMware Horizon View client will be unusable until a reboot has been completed.

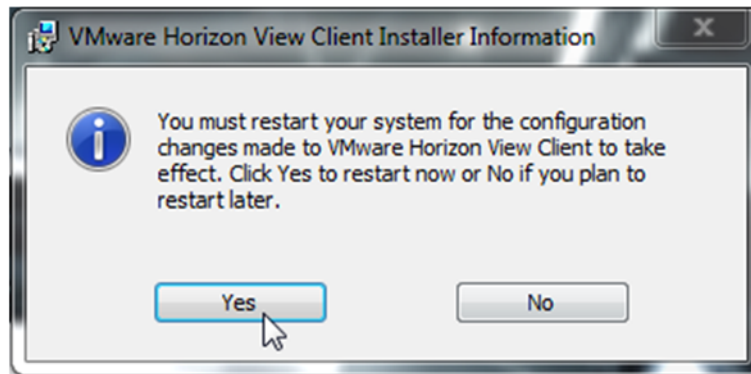


Figure 9

Connecting to a vLab's Virtual Machine

1. After rebooting your machine and logging on. You should now see a new icon on your desktop seen in figure 10.

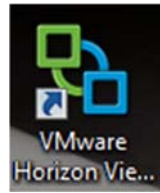


Figure 10

2. Double-click the icon shown in figure 10 to start the application. The window should already be populated with vlabs.uml.edu as the connection server, if not enter "vlabs.uml.edu" into the text box. Click the "Connect" button shown in figure 11.

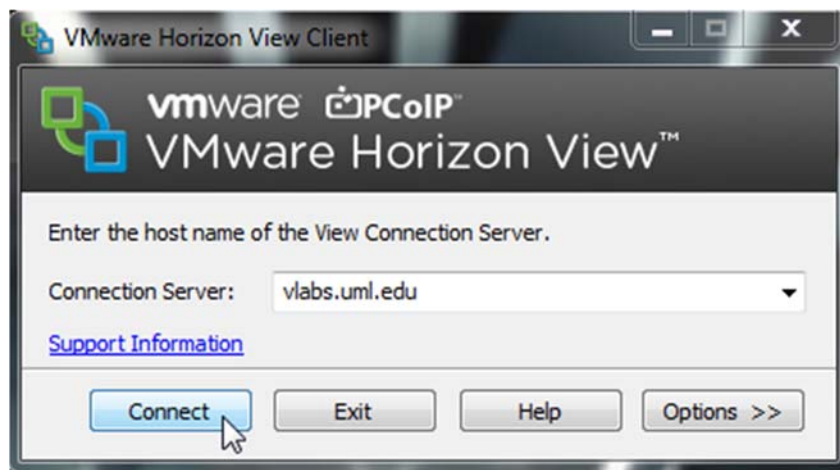


Figure 11

3. You will then be prompted for your username and password in the following window shown in figure 12. Enter your email address into the username box, and password. You can safely ignore the "Domain" field.

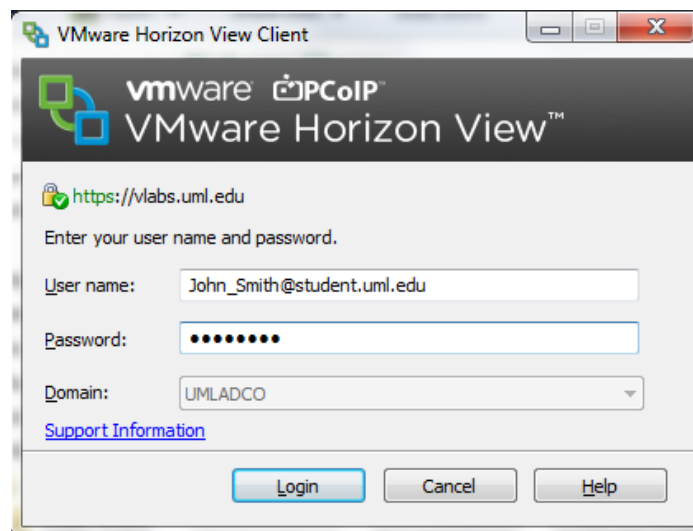


Figure 12

- Click the “Login” button to log into the client. A window, in figure 13, showing the labs available to you will pop up. Select the lab you would like to connect to and click “connect.”
- Once you click “connect” you will be automatically connected to, and logged into the machine you have chosen.

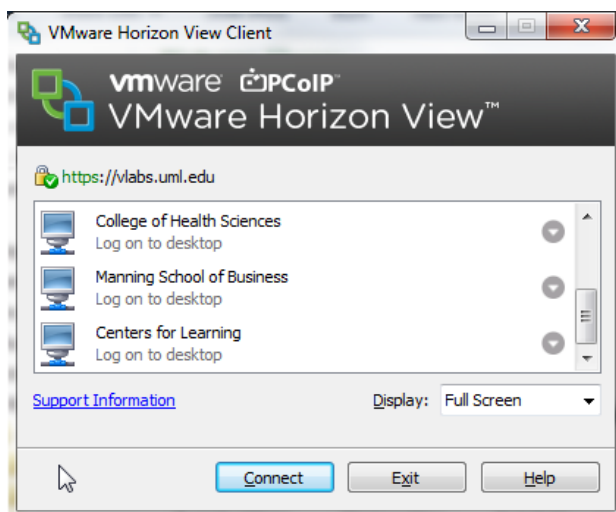


Figure 13

- The window will be automatically opened in full screen mode. If this is not desirable, the screen can be resized in order to see your local desktop as well. To do so, click the resize window button in the top menu bar. The button which is boxed in red in figure 14.



Figure 14

- You can now resize the window by dragging the bottom right corner. You can also go back to full screen by clicking the same button in figure 13.